



# Supplementation of EPA and DHA in pregnant women with type 1 diabetes mellitus

Marina Ivanisevic, Marina Horvaticek, Karlo Delmis & Josip Delmis

To cite this article: Marina Ivanisevic, Marina Horvaticek, Karlo Delmis & Josip Delmis (2021) Supplementation of EPA and DHA in pregnant women with type 1 diabetes mellitus, *Annals of Medicine*, 53:1, 848-859, DOI: [10.1080/07853890.2021.1936151](https://doi.org/10.1080/07853890.2021.1936151)

To link to this article: <https://doi.org/10.1080/07853890.2021.1936151>



© 2021 The Author(s). Published by Informa UK Limited, trading as Taylor & Francis Group.



Published online: 01 Jul 2021.



Submit your article to this journal [↗](#)



Article views: 2992



View related articles [↗](#)



View Crossmark data [↗](#)



Citing articles: 1 View citing articles [↗](#)

## Supplementation of EPA and DHA in pregnant women with type 1 diabetes mellitus

Marina Ivanisevic<sup>a</sup>, Marina Horvaticek<sup>b</sup>, Karlo Delmis<sup>c</sup> and Josip Delmis<sup>a</sup>

<sup>a</sup>Referral Center for Diabetes in Pregnancy, Ministry of Health Republic of Croatia, Clinical Department of Obstetrics and Gynecology, Zagreb University Hospital Center, School of Medicine, University of Zagreb, Zagreb, Croatia; <sup>b</sup>Institute Rudjer Boskovic, Zagreb, Croatia; <sup>c</sup>Montanuniversitat Leoben, Leoben, Austria

### ABSTRACT

**Background/objective:** Lower proportions of n-3 PUFAs have been observed in neonates born to diabetic mothers. We aimed to investigate the association between DHA and EPA supplementation during pregnancy complicated with type 1 diabetes on concentration and proportion of fatty acids in maternal and foetal blood.

**Subjects and methods:** We conducted a prospective randomized, single-blinded, placebo-controlled trial of 111 eligible pregnant women with type 1 diabetes and presented the results of 84 (intervention arm and control arm comprised 42 participants each) of them who successfully finished the trial in an academic hospital. The initiation of EPA and DHA supplementation or placebo started at randomization visit on gestational week 11–12. Blood samples were taken on the first (screening) visit to the clinic (1st trimester, between 8th and 10th gestational week, GW), then in the second trimester (19–24th GW) and third trimester (30th–33rd GW). On the delivery day, a blood sample was taken on fasting just before birth. The umbilical vein blood sample was taken shortly after the delivery.

**Results:** We found a significant increase in the intervention group when compared the first and the third trimester for n-3 PUFAs concentration, 4.3 mg/L (3.3–7.6): 10.0 mg/L (7.1–13.7),  $p < .001$ . In the intervention group, the concentration of DHA in maternal vein serum was 11.4 mg/L (7.7–17.5), and in umbilical vein serum, it was 5.1 mg/L (3.0–7.7), which was significantly higher than that in the control group, maternal vein serum: median 9.2 mg/L (6.0–12.3),  $p = .03$  and umbilical vein serum: median 3.4 mg/L (2.1–5.6),  $p = .009$ .

**Conclusion:** The increased weight gain in pregnancy and concentration and proportions of DHA, n-3 PUFAs with a decreased proportion of AA, n-6 PUFAs, and AA/DHA ratio in maternal and umbilical vein serum summarize the effect of supplementation with EPA and DHA.

### ARTICLE HISTORY

Received 13 February 2021  
Revised 28 April 2021  
Accepted 22 May 2021

### KEYWORDS


Diabetes mellitus type 1; pregnancy; supplementation; EPA; DHA; fatty acids; omega-3; omega-6; macrosomia

## 1. Introduction

Type 1 diabetes is an autoimmune disease because of selective beta-cell destruction and insulin secretion defects [1]. In addition to carbohydrate metabolism disturbances, we associate T1DM with maternal lipid content and composition [2]. A combination of n-3 PUFAs and pregnancy yields immunological tolerance and stimulates endogenous insulin production in women with T1DM [3]. Lower concentrations and lower proportions of n-3 PUFAs have been observed in neonates born to diabetic mothers [4,5]. Whalley et al. and Neuringer et al. have shown that intrauterine reduction in DHA concentration leads to learning difficulties afterward [6,7]. Docosahexaenoic acid plays a crucial role in developing nervous system cells and

reduces preterm birth frequency [8]. The foetus depends on the transport of long-chain polyunsaturated fatty acids through the placenta. The placenta is dominant for the selective channelling of DHA from mother to foetus [9]. Maternal plasma-free fatty acids are an essential source of PUFAs for the foetus [2]. On the placental cell membrane, there are specific FABP proteins responsible for the transfer of PUFAs [9,10]. The transfer of these fatty acids is markedly determined and directed from the mother to the foetus. Several active transporters located on the surface of either the maternal or foetal side of the placenta regulate the transport of nutrients through the placenta [9]. The ability of fatty acids to pass through the placenta is vital for foetal brain development, foetal

**CONTACT** Josip Djelmis  [josip.djelmis@zg.t-com.hr](mailto:josip.djelmis@zg.t-com.hr)  Department of OB/GYN, Petrova 13, Zagreb, 10000, Croatia

 Supplemental data for this article can be accessed [here](#).

© 2021 The Author(s). Published by Informa UK Limited, trading as Taylor & Francis Group.

This is an Open Access article distributed under the terms of the Creative Commons Attribution License (<http://creativecommons.org/licenses/by/4.0/>), which permits unrestricted use, distribution, and reproduction in any medium, provided the original work is properly cited.

growth, and cardiovascular and pulmonary development. Proper transfer of fatty acids through the placenta in the foetus's direction plays a significant role in healthy foetal development. It is a significant energy source in constructing the cell membrane and is an essential signalling precursor of cellular molecules. In term placentas, after the release of free fatty acids from VLDL or chylomicrons, fatty acids are transported and bound to FABP, which are further translocated to the cell [11–13].

N-3 PUFA supplementation in pregnancy has many benefits for both mother and baby. It reduces depression in pregnant women, prolongs pregnancy duration, reduces the risk of premature birth, and increases newborns' weight [14,15]. An increase in IQ and cognitive function of 4-year-old children whose mothers took n-3 PUFA supplementation during pregnancy and lactation has been demonstrated [16].

This study aims to explore a) the influence of DHA and EPA supplementation on the change in the concentration and the percentage of individual FAs, total FAs, saturated fatty acids (SFAs), monounsaturated fatty acids (MUFAs), and n-6 polyunsaturated fatty acids (PUFAs) in maternal vein serum and umbilical vein serum. b) the impact of EPA and DHA supplementation on gestational weight gain (GWG), body mass index (BMI), and HbA1c during pregnancy. c) the impact of EPA and DHA supplementation on foetal growth. d) to calculate the ratio of fatty acids between maternal venous serum and umbilical vein serum as prioritizing transport of individual fatty acids from mother to foetus. e) a correlation of FAs in maternal and umbilical serum.

## 2. Subjects and methods

A prospective randomized, single-blinded, placebo-controlled trial (<https://doi.org/10.1186/ISRCTN15203878>) was undertaken at Referral Centre for Diabetes in Pregnancy Ministry of the Health Republic of Croatia, Department of Obstetrics and Gynaecology, Zagreb, University Hospital Centre, Zagreb, Croatia, from January 1, 2014, and September 30, 2018.

### 2.1. Ethics approval

The Ethics Committee at the Department of Obstetrics and Gynaecology (No. 021- 1/208 A-13) and the School of Medicine's Ethics Committee, the University of Zagreb (No. 380-59-10106-15-168/87) approved the study. The trial was part of the scientific project

approved by the Ministry of Science, Education and Technology of the Republic of Croatia, entitled Metabolic and Endocrine Changes in Pregnant Patients with Diabetes (No. 108-1080401-0386). All respondents were informed of the survey ("Notice to Respondent") and signed the "Consent for Adult Participation in the Survey."

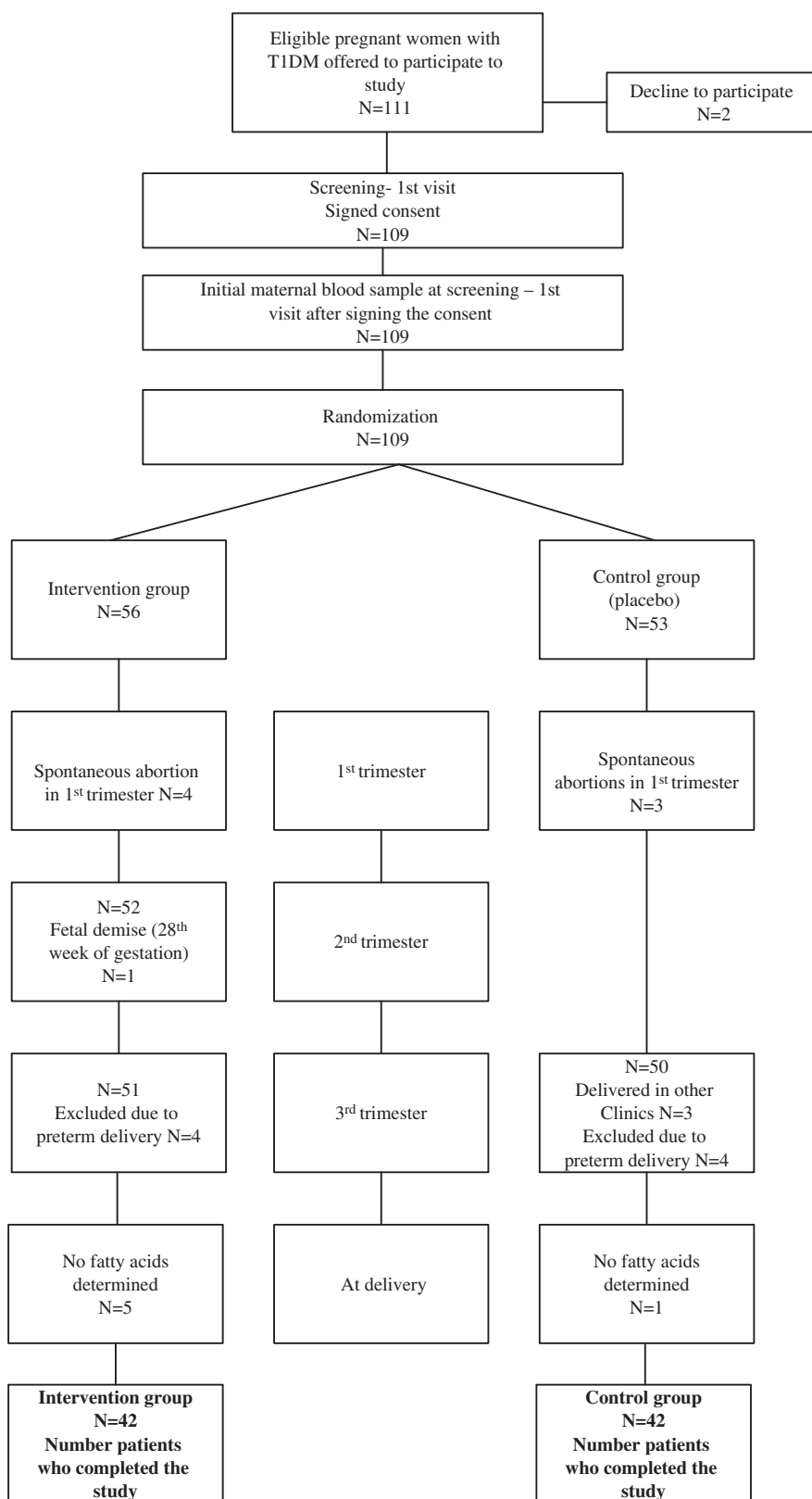
### 2.2. Study design

One hundred and eleven eligible pregnant women with type 1 diabetes mellitus, according to the inclusion criteria between 8 and 10 gestational weeks, were informed and offered participation in the study (Figure 1). Two of them declined to be recruited. At this first (enrollment/screening) visit, 109 participants signed their informed consent, and the blood samples were collected. At the second randomization visit between gestational weeks 11 and 12, the computer-generated randomization program decided which pregnant woman with type-1 diabetes would be allocated to EPA and DHA (intervention arm) or placebo (control arm). Participants were randomly assigned in a 1:1 ratio.

Spontaneous abortion during the first trimester occurred in four women in the intervention group and three spontaneously aborted in the control group. During the second and third-trimester, dropouts in the intervention group were because of foetal demise and preterm delivery. In the control group, we lost seven subjects due to giving birth in other clinics or premature delivery. We did not collect the blood samples at delivery in 5 participants in the investigation arm and one in the control arm. Eighty-four pregnant women with T1DM were included in a prospective randomized, single-blinded, placebo-controlled trial. The number of participants was 42 subjects per arm who finished the trial, and their results are analyzed and presented in the study.

Forty-two of them were taking EPA and DHA twice a day (each capsule contains EPA 60 mg and DHA 308 mg), whereas the rest of 42 women were on the usual diabetic diet for pregnant women taking placebo twice a day (each capsule contains 2 mL corn oil; 948 mg linoleic acid and 18 mg  $\alpha$ -linolenic acid). The starting of EPA and DHA supplementation into the pregnancy was between 11 and 12 weeks of pregnancy.

All participants received general advice on healthy eating before becoming pregnant (pre-pregnancy counselling for women with type 1 diabetes). Blood samples were analyzed from all pregnant women for



**Figure 1.** Flow chart of the participants.

fasting C-peptide (FC-peptide), fasting plasma glucose (FPG), HbA1c, concentration, and proportion of FAs in each trimester throughout pregnancy and after

delivery. We analyzed umbilical vein blood for foetal C-peptide level, glucose concentration, insulin resistance, concentration, and proportion of FAs.

### 2.3. Inclusion criteria

The study included diabetic pregnant women who had no diabetes complications (proliferative retinopathy, nephropathy, chronic hypertension, and neuropathy), and the pregnancy progressed neatly and resulted in the delivery of healthy children/newborns.

Pregnant women were on intensified insulin therapy (a combination of basal-bolus analog insulins) and had well-controlled glycaemia.

### 2.4. Exclusion criteria

Women already taking prenatal supplements containing EPA and DHA were not eligible for the study. The exclusion criteria were spontaneous abortion, premature delivery, multiple pregnancies, genetic abnormalities, or foetal malformations.

### 2.5. Materials

The standards for gas chromatography (Supelco FAME MIX 37, PUFA No. 1, PUFA No. 3) are the product of the factories of Supelco Inc., Bellefonte, PA, USA. Organic solvents used for total lipid extraction were purchased from Sigma-Aldrich, Chemie GmbH, Steinheim, Germany, internal standard heptadecanoic acid, and anhydrous sodium sulphate 2,6-di-tert-butyl-4-methyl phenol (BHT) and concentrated hydrochloric acid.

Blood samples were taken on fasting in the morning from the left cubital vein into tubes with serum separation gel (Vacuette® tube 5 mL Z Serum Separator Clot Activator). All samples were centrifuged at 2000 g within one hour of sampling for 10 min. The serum was separated, dissolved in two tubes (cryotube), and stored in a freezer at 75 °C until further analysis. Blood samples were taken on the first screening visit to the clinic (1st trimester, between 9<sup>th</sup> and 10<sup>th</sup> week of pregnancy), then in the second trimester (19<sup>th</sup>–24<sup>th</sup> week) and third trimester (30<sup>th</sup>–33<sup>rd</sup> week). On the day of birth, a blood sample was taken on fasting just before birth. The umbilical vein blood sample was taken shortly after delivery before the placenta was removed.

Blood glucose, C-peptide concentrations, and glycosylated haemoglobin (HbA1c) content in maternal and umbilical vein blood were determined on the day of sampling, while total lipid analysis was subsequently performed.

Determination of C-peptide concentration (pmol/L) was performed at the Clinical Institute for Laboratory Diagnostics of Clinical Hospital Zagreb using the

electrochemiluminescent method “ECLIA” on the Roche-Elecsys (Roche Diagnostics, Switzerland) autoanalyzer, reagent from the same manufacturer. Analytical sensitivity 0.003 nmol/L.

Glucose concentration (mmol/L) was determined by an enzymatic UV test (reference method with hexokinase) on a Roche Cobas C301 analyzer using reagents from the same manufacturer (Roche Diagnostics, Switzerland) at the Clinic for Women’s Diseases and Births. Analytical sensitivity 0.056 mmol/L.

Determination of HbA1c (%) by turbidimetric inhibition immunoassay on a Roche Cobas C501 analyzer of the same manufacturer (Roche Diagnostics, Switzerland) was performed Clinical Laboratory of Laboratory Diagnostics of Clinical Hospital Centre Zagreb.

Neonatal insulin resistance was calculated according to homeostasis Model Assessment 2 (HOMA2) [17] using software available online (<http://homa.calculator.software.informer.com/2.2>). The extraction of total lipids and the conversion of fatty acids to methyl esters was carried out at the Department of Chemistry and Biochemistry, School of Medicine, University of Zagreb. Total lipids were isolated from serum samples by the Folch extraction method with organic solvents [18].

The analysis of the composition of fatty acid methyl esters was performed by gas chromatography using an Agilent 7890B chromatograph (Agilent Technologies, CA, USA) equipped with a flame ionization detector (FID) at a laboratory service company, Sample Control Ltd. We used a capillary HP 88 column that had a length of 100 m, an internal diameter of 0.25 mm, and an active layer thickness of 0.20 μm (Agilent J&W, USA) to separate methyl esters. The instrument was equipped with an autosampler from the same manufacturer to apply a reduced sample volume (split/splitless system). The injector temperature was 200 °C, and the detector temperature was 250 °C.

The initial column temperature was 140 °C for the first 5 min, followed by an increase from 4 °C/min to 240 °C, maintained for 15 min. The sample (0.5 μL) was injected in split mode at a ratio of 1:100. With a purity of 6.0, helium was used as the carrier gas at a flow rate of 0.8 mL/min.

Identifying individual fatty acids was performed based on the retention time by comparing the retention time of known standards (PUFA No. 1, PUFA No. 3, C8-C20, Supelco 37 Component FAME mix, all Supelco, USA).

The fatty acid content was expressed as the relative weight (%) and mass concentration (mg/L). Quantitative determination of individual fatty acids was performed by comparing the peak area of the internal standard

(heptadecanoic acid, C 17: 0, Sigma Aldrich, Germany) with the individual fatty acids' peak area. Chromatogram processing was performed using an integrated computer program, Agilent 7890B GC (Agilent Technologies, CA, USA) in a trial with 80% power, a level of 0.05, and three tests of significance.

## 2.6. Sample size

For *post-hoc* power calculation, we tested the Bonferroni adjustment for multiple comparisons of n-3 PUFAs proportion in maternal vein serum. For a sample size of 42 participants in each study group and,  $\alpha$  level of 0.05, a power ( $1-\beta$ ) was 0.9683486. We also tested the *post-hoc* power difference mean of the percentage of n-3 PUFAs in both studied groups' umbilical vein serum. For the sample size of 42 participants in each group and the  $\alpha$  level of 0.05, a power ( $1-\beta$ ) was 0.950473.

## 2.7. Statistical analysis

Statistical analyses were performed using the statistical package SPSS version 24 (IBM, Armonk, NY, USA). Absolute and relative frequencies represent categorical data. Numerical data are described by the mean (arithmetic mean) and standard deviation in the distributions following the normal, and in other cases by the mean (median) and the interquartile range's limits. The Bonferroni adjustment test was used to examine the normality of the distribution of numerical variables. Student's *t*-test tested group differences between normally distributed continuous variables, and differences between nonnormally distributed continuous variables were tested by the Mann-Whitney U test. Group differences between categorical variables were tested by the  $\chi^2$  test and, if necessary, by Fisher's exact test. The correlation between normally distributed numerical variables was evaluated by Pearson's correlation coefficient (*r*). Data that were not normally distributed were log-transformed before analyses. Regression with the Spearman correlation coefficient ( $r_{\text{rho}}$ ) was performed for non-normal data. For repeated measurements of continuous data, the Wilcoxon signed-rank test was used. All *p* values are two-sided. The significance level was set at  $p < .05$ .

## 3. Results

### 3.1. Maternal and neonatal characteristics

No significant difference between the two groups could be established concerning age, duration of

diabetes, and the onset of type one diabetes. In the second and third trimesters of pregnancy, the intervention group participants gained significantly more weight compared to the controls. A significant decline in HbA1c was found in the control group over the trimesters, although the increase in BMI and weight gain between the first and third trimesters occurred in the same group. We could not establish any difference in the prevalence of neonatal macrosomia between the studied groups, as shown in Table 1. A significant decrease in HbA1c and an increase in maternal fasting C-peptide, pregnancy weight gain, weight gain difference, and BMI were found in the intervention group when comparing the first and third trimesters of pregnancy. No difference was found in pregnancy duration, neonatal weight and length, neonatal ponderal index, Apgar index at 1 and 5 min, umbilical artery pH, male/female newborn ratio, and macrosomia incidence, umbilical vein glucose and C-peptide concentration, and insulin resistance (IR HOMA-2) between studied groups.

### 3.2. Concentration of fatty acids in the two study groups

A significantly higher concentration of  $\alpha$ -linolenic acid (C18: 3n-3;  $p = .025$ ) was found in the intervention group in the first and second trimester than in the control group. A higher DHA and n-3 PUFA concentrations were found in the second and third trimesters of pregnancy in the intervention group ( $p = .004$  and  $p = .001$ ) than in the control group. The concentration of  $\gamma$ -linolenic acid (C18: 3 n-6) was higher in the first and second trimester in the intervention group ( $p = .025$  and  $p = .001$ ) compared to the control group.

The concentrations of FAs between the first and third trimester of pregnancy were compared in the intervention group. A significant increase was confirmed for total fatty acids, palmitic acid (C16: 0), stearic acid (C18:0), SFAs, palmitoleic acid (C16: 1 n-7), oleic acid (C18:1 n-9), MUFAs, EPA (C20:5 n-3), DHA (C22: 6n-3) and n-3 PUFAs. Accordingly, we compared the concentrations of FA between the first and third trimester in the control group. A significant increase was measured for total fatty acids, stearic acids (C18:0), SFA, palmitoleic acid (C16:1 n-7), oleic acid (C18: 1n-9), MUFAs, EPA (C20:5 n-3), DHA (C22:6 n-3), n-3 PUFAs, linoleic acid (C18:2 n-6), arachidonic acid (C20:4 n-6), and n-6 PUFAs (Table 2).



**Table 1.** Maternal and neonatal characteristics.

|   | Intervention group<br>(n = 42) | Control group<br>(n = 42) | p           | 95% CI   |          |
|---|--------------------------------|---------------------------|-------------|----------|----------|
|   |                                |                           |             | Lower    | Upper    |
| <b>Maternal characteristics</b>   |                                |                           |             |          |          |
| Age (years)   | 29.4 ± 5.3                     | 30.5 ± 5.2                | .321        | -1.134   | 3.420    |
| Diabetes duration (years)   | 11.8 ± 6.9                     | 13.8 ± 7.3                | .176        | -0.971   | 5.209    |
| Age of onset type 1 DM  | 17.6 ± 7.5                     | 16.6 ± 8.0                | .565        | -4.33821 | 2.38583  |
| Body mass index in the first trimester (kg/m <sup>2</sup> )                       | 22.9 ± 2.5 <sup>a</sup>        | 23.5 ± 3.2 <sup>b</sup>   | .802        | -1.7516  | 1.4334   |
| Body mass index in the second trimester (kg/m <sup>2</sup> )                      | 24.8 ± 2.9                     | 24.6 ± 3.0                | .726        | -1.5566  | 1.0900   |
| Body mass index in the third trimester (kg/m <sup>2</sup> )                       | 27.1 ± 3.1 <sup>a</sup>        | 26.3 ± 3.1 <sup>b</sup>   | .284        | -2.1441  | 0.6366   |
| Body mass index at the day of delivery (kg/m <sup>2</sup> )                       | 27.7 ± 3.3                     | 27.2 ± 3.2                | .539        | -1.8885  | 0.9957   |
| Gestational weight gain in the first trimester (kg)                               | 1.3 ± 2.1 <sup>c</sup>         | 0.6 ± 2.8 <sup>d</sup>    | .226        | -1.7413  | 0.1475   |
| Gestational weight gain in the second trimester (kg)                              | 6.5 ± 3.2                      | 5.0 ± 3.4                 | <b>.045</b> | -2.8745  | -0.0304  |
| Gestational weight gain in the third trimester (kg)                               | 12.8 ± 4.3 <sup>c</sup>        | 9.9 ± 4.2 <sup>d</sup>    | <b>.002</b> | -4.7634  | -1.0900  |
| Gestational weight gain difference between the third and the first trimester (kg) | 11.5 ± 4.0                     | 9.2 ± 4.1                 | <b>.012</b> | -4.09539 | -0.52604 |
| Gestational weight gain at the day of delivery (kg)                               | 14.3 ± 4.8                     | 12.4 ± 4.2                | .067        | -3.7815  | 0.1291   |
| HbA <sub>1c</sub> in the first trimester (%)                                      | 6.8 ± 1.0 <sup>f</sup>         | 6.6 ± 1.2 <sup>g</sup>    | .415        | -0.6948  | 0.2898   |
| HbA <sub>1c</sub> in the second trimester (%)                                     | 5.7 ± 0.6                      | 5.6 ± 0.5                 | .367        | -0.3648  | 0.1362   |
| HbA <sub>1c</sub> in the third trimester (%)                                      | 6.0 ± 0.8 <sup>f</sup>         | 5.8 ± 0.7 <sup>g</sup>    | .229        | -0.5376  | 0.1308   |
| HbA <sub>1c</sub> difference between the third and the first trimester (%)        | -0.87 ± 0.9                    | -0.85 ± 1.1               | .954        | -0.4325  | 0.4581   |
| Smoking no/yes n (%)  | 35/7 (83.3/16.7)               | 37/5 (88.1/11.9)          | .378        | 0.744    | 0.766    |
| Primipara/multipara n (%)   | 24/18 (57.1/42.9)              | 27/15 (64.3/35.7)         | .503        | 0.643    | 0.668    |
| <b>Maternal serum measurements</b>  |                                |                           |             |          |          |
| FC-peptide concentration in the first trimester (pmol/L)                          | 10.0 <sup>h</sup> (10.0–60.0)  | 10.0 (10.0–30.0)          | .925        |          |          |
| FC-peptide concentration in the second trimester (pmol/L)                         | 10.0 (10.0–110.0)              | 10.0 (10.0–20.0)          | .131        |          |          |
| FC-peptide concentration in the third trimester (pmol/L)                          | 20.0 <sup>h</sup> (10.0–150.0) | 10.0 (10.0–30.0)          | <b>.045</b> |          |          |
| FC-peptide concentration after delivery (pmol/L)                                  | 20.0 (10.0–100.0)              | 10.0 (10.0–20.0)          | .210        |          |          |
| FP glucose in the first trimester (mmol/L)  | 5.2 ± 1.9                      | 5.1 ± 1.9                 | .854        | -0.9194  | 0.7633   |
| FP glucose in the second trimester (mmol/L)                                       | 4.1 ± 1.3                      | 5.0 ± 2.0                 | <b>.014</b> | 0.1893   | 1.6488   |
| FP glucose in the third trimester (mmol/L)  | 5.1 ± 2.0                      | 4.7 ± 1.2                 | .293        | -1.0964  | 0.3345   |
| FP glucose at the time of delivery (mmol/L)                                       | 5.4 ± 1.7                      | 5.4 ± 2.0                 | .926        | -0.7714  | 0.8476   |
| <b>Neonatal characteristics</b>   |                                |                           |             |          |          |
| Gestational age   | 38.6 ± 0.8                     | 38.4 ± 0.8                | .285        | -0.543   | 0.162    |
| Birth weight (g)  | 3488.8 ± 496.8                 | 3517.5 ± 455.5            | .781        | -176.147 | 233.528  |
| Birth length (cm)   | 49.2 ± 2.0                     | 49.5 ± 2.0                | .487        | -0.529   | 1.101    |
| Ponderal index (g) × 100/ (cm) <sup>3</sup>                                       | 2.9 ± 0.3                      | 2.9 ± 0.2                 | .604        | -0.15144 | 0.08849  |
| Apgar score at 1 min  | 9.8 ± 0.3                      | 9.9 ± 0.4                 | .394        | -0.221   | 0.411    |
| Apgar score at 5 min  | 9.9 ± 0.5                      | 9.9 ± 0.2                 | .563        | -0.115   | 0.210    |
| pH umbilical artery blood   | 7.24 ± 0.07                    | 7.24 ± 0.07               | >.9         | -0.03518 | 0.03500  |
| Sex ratio: male: female n (%)   | 25/17 (59.5/40.5)              | 21/21 (50.0/50.0)         | .511        | 0.499    | 0.524    |
| Macrosomic: eutrophic neonates  | 5/37 (11.9/88.1)               | 7/35 (16.7/83.3)          | .756        | 0.749    | 0.771    |
| <b>Umbilical vein blood measurements</b>  |                                |                           |             |          |          |
| C-peptide (pmol/L)  | 690.0 (510.0–980.0)            | 800.0 (430.0–1270.0)      | .328        |          |          |
| Glucose (mmol/L)  | 4.6 ± 2.2                      | 4.9 ± 1.6                 | .451        | -0.5283  | 1.1771   |
| IR HOMA-2   | 1.5 (1.1–2.2)                  | 1.9 (0.9–2.9)             | .242        |          |          |

FP glucose: fasting plasma glucose; FC-peptide: fasting C-peptide; T1DM: type 1 diabetes mellitus; BMI: body mass index; data are mean (SD) unless otherwise indicated, data are median (1<sup>st</sup> and 3<sup>rd</sup> quartiles), *t*-test was used to test the statistical difference between two groups, or Mann–Whitney U test, *p* values in bold are significant, 1<sup>st</sup> and 3<sup>rd</sup> trimester of pregnancy. <sup>a,b,c,d,h</sup>*p* < .001; <sup>e</sup>*p* Statistically significant at the Bonferroni-corrected  $\alpha$ . <sup>f,g</sup>*p* < .05 Wilcoxon signed-rank test; <sup>i</sup>*p* Statistically not significant at the Bonferroni-corrected  $\alpha$ .

### 3.3. The proportion of fatty acids in the two study groups

A higher proportion of DHA, n-3 PUFAs, and  $\gamma$ -linolenic acid (C18: 3 n-6) was found in the second and third trimesters of pregnancy. A lower proportion of linoleic acid (C18: 2 n-6), n-6 PUFAs, and AA/DHA was measured in the intervention group than in the control group. The proportions of FAs between the first and third trimesters of pregnancy were compared in the intervention group. A significant increase was found for palmitic acid (C16: 0), DHA (C22: 6n-3), n-3 PUFAs, and a significant reduction was found for stearic acid (C18: 0), arachidonic acid (C20: 4n-6), n-6 PUFAs, and AA/DHA ratio. Accordingly, we compared

the proportions of FA between the first and third trimesters in the control group. A significant decrease was found for arachidonic acid (C22: 4n-6) (Table 3).

### 3.4. Concentration difference of fatty acids between the third and the first trimester of pregnancy in two studied groups

Supplemental Tables 1 and 2 show the difference in concentration and proportion of fatty acids between the first and third trimester. The intervention group had a significantly more large difference for DHA and n-3 PUFA than the control group.

**Table 2.** The concentration of fatty acids in two study groups of pregnant women with type 1 diabetes.

|  | Intervention group<br>(n = 42)   | Control group<br>(n = 42)        | p               |
|--|----------------------------------|----------------------------------|-----------------|
| Fatty acids (mg/L)                                       |                                  |                                  |                 |
| Total fatty acids in the first trimester of pregnancy    | 276.9 <sup>a</sup> (214.8–350.2) | 227.9 <sup>b</sup> (157.7–328.8) | .115            |
| Total fatty acids in the second trimester of pregnancy   | 394.4 (317.8–486.7)              | 380.8 (248.5–428.1)              | .233            |
| Total fatty acids in the third trimester of pregnancy    | 506.5 <sup>a</sup> (357.9–422.6) | 422.6 <sup>b</sup> (289.1–596.1) | .112            |
| Palmitic acid (C16:0) in the first trimester             | 69.3 <sup>c</sup> (54.2–86.1)    | 59.6 (45.2–85.2)                 | .188            |
| Palmitic acid (C16:0) in the second trimester            | 109.1 (76.8–129.1)               | 104.3 (67.1–117.0)               | .266            |
| Palmitic acid (C16:0) in the third trimester             | 142.4 <sup>c</sup> (98.2–177.1)  | 121.9 (87.8–165.8)               | .168            |
| Stearic acid (C18:0) in the first trimester              | 24.9 <sup>d</sup> (17.6–31.8)    | 19.9 <sup>e</sup> (12.9–31.5)    | .089            |
| Stearic acid (C18:0) in the second trimester             | 30.4 (24.2–40.0)                 | 29.7 (17.5–33.0)                 | .096            |
| Stearic acid (C18:0) in the third trimester              | 34.9 <sup>d</sup> (24.3–48.6)    | 28.8 <sup>e</sup> (20.1–41.1)    | .137            |
| SFAs in the first trimester                              | 101.2 <sup>f</sup> (77.4–130.0)  | 79.2 <sup>g</sup> (59.6–126.3)   | .125            |
| SFAs in the second trimester                             | 150.6 (108.0–188.0)              | 144.5 (93.9–176.1)               | .330            |
| SFAs in the third trimester                              | 196.6 <sup>f</sup> (133.4–237.5) | 165.8 <sup>g</sup> (117.2–226.1) | .233            |
| Palmitoleic acid (C16:1 n-7) in the first trimester      | 2.9 <sup>h</sup> (2.0–4.6)       | 2.9 <sup>i</sup> (1.5–3.6)       | .316            |
| Palmitoleic acid (C16:1 n-7) in the second trimester     | 5.0 (3.5–6.4)                    | 3.6 (2.2–5.9)                    | .145            |
| Palmitoleic acid (C16:1 n-7) in the third trimester      | 6.6 <sup>h</sup> (4.4–9.2)       | 5.5 <sup>i</sup> (3.5–8.2)       | .050            |
| Oleic acid (C18:1 n-9) in the first trimester            | 45.8 <sup>j</sup> (32.6–64.3)    | 37.4 <sup>k</sup> (20.6–53.5)    | .082            |
| Oleic acid(C18:1 n-9) in the second trimester            | 63.2 (43.2–83.1)                 | 60.0 (40.0–72.3)                 | .083            |
| Oleic acid(C18:1 n-9) in the third trimester             | 89.1 <sup>j</sup> (61.2–121.3)   | 74.1 <sup>k</sup> (43.1–107.1)   | .091            |
| MUFAs in the first trimester                             | 51.7 <sup>j</sup> (38.4–72.3)    | 42.2 <sup>m</sup> (23.1–58.4)    | .061            |
| MUFAs in the second trimester                            | 71.5 (51.7–99.8)                 | 65.6 (38.6–78.7)                 | .059            |
| MUFAs in the third trimester                             | 101.5 <sup>j</sup> (70.9–137.0)  | 85.1 <sup>m</sup> (50.5–114.2)   | .133            |
| α-linolenic acid (C18:3 n-3) in the first trimester      | 0.0 (0.0–2.5)                    | 0.0 (0.0–2.0)                    | <b>.025</b>     |
| α-linolenic acid (C18:3 n-3) in the second trimester     | 2.1 (0.8–2.3)                    | 1.8 (0.0–2.5)                    | <b>&lt;.001</b> |
| α-linolenic acid (C18:3 n-3) in the third trimester      | 1.3 (0.0–1.9)                    | 1.0 (0.0–1.6)                    | .089            |
| Eicosapentanoic acid in the first trimester (C20:5 n-3)  | 2.3 <sup>n</sup> (1.6–3.2)       | 2.2 <sup>o</sup> (0.8–3.5)       | .622            |
| Eicosapentanoic acid in the second trimester (C20:5 n-3) | 2.9 (2.1–4.4)                    | 4.0 (2.0–4.4)                    | .639            |
| Eicosapentanoic acid in the third trimester (C20:5 n-3)  | 3.9 <sup>n</sup> (2.5–5.2)       | 3.4 <sup>o</sup> (2.3–5.4)       | .525            |
| Docosahexaenoic acid in the first trimester (C22:6 n-3)  | 4.3 <sup>p</sup> (3.3–7.0)       | 3.7 <sup>r</sup> (2.5–5.8)       | .157            |
| Docosahexaenoic acid in the second trimester (C22:6 n-3) | 10.0 (7.1–13.7)                  | 7.4 (5.1–9.2)                    | <b>.004</b>     |
| Docosahexaenoic acid in the third trimester (C22:6 n-3)  | 13.4 <sup>p</sup> (7.2–18.1)     | 7.4 <sup>r</sup> (5.6–11.4)      | <b>.001</b>     |
| n-3 PUFA in the first trimester                          | 8.6 <sup>s</sup> (5.8–12.2)      | 7.0 <sup>t</sup> (4.1–13.0)      | .257            |
| n-3 PUFA in the second trimester                         | 18.8 (13.7–20.6)                 | 13.0 (9.6–16.4)                  | <b>.003</b>     |
| n-3 PUFA in the third trimester                          | 20.8 <sup>s</sup> (14.0–28.9)    | 13.4 <sup>t</sup> (8.7–19.8)     | <b>.002</b>     |
| Linoleic acid in the first trimester(C18:2 n-6)          | 75.9 <sup>u</sup> (62.5–110.3)   | 72.0 <sup>v</sup> (48.8–103.0)   | .212            |
| Linoleic acid in the second trimester (C18:2 n-6)        | 123.2 (83.0–143.4)               | 110.4 (75.4–138.2)               | .423            |
| Linoleic acid in the third trimester(C18:2 n-6)          | 147.1 <sup>u</sup> (110.2–177.9) | 127.5 <sup>v</sup> (81.8–187.5)  | .317            |
| γ-linolenic acid (in the first trimester C18:3 n-6)      | 1.3 (0.0–1.6)                    | 0.0 (0.0–1.2)                    | <b>.025</b>     |
| γ-linolenic acid (in the second trimester C18:3 n-6)     | 1.3 (1.0–1.7)                    | 0.0 (0.0–1.2)                    | <b>.001</b>     |
| γ-linolenic acid (in the third trimester C18:3 n-6)      | 1.3 (0.0–2.0)                    | 1.0 (0.0–1.6)                    | .089            |
| Arachidonic acid in the first trimester (C20:4 n-6)      | 21.5 <sup>w</sup> (13.6–28.6)    | 20.1 <sup>x</sup> (13.5–30.3)    | .774            |
| Arachidonic acid in the second trimester (C20:4 n-6)     | 28.6 (20.9–36.29)                | 26.8 (18.6–33.7)                 | .808            |
| Arachidonic acid in the third trimester (C20:4 n-6)      | 29.3 <sup>w</sup> (22.6–43.0)    | 31.8 <sup>x</sup> (20.7–37.0)    | .680            |
| n-6 PUFA in the first trimester                          | 105.1 <sup>y</sup> (83.3–147.6)  | 99.6 <sup>z</sup> (68.1–136.3)   | .266            |
| n-6 PUFA in the first second                             | 159.7 (117.9–194.8)              | 146.9 (97.0–184.1)               | .444            |
| n-6 PUFA in the third trimester                          | 188.8 <sup>y</sup> (139.7–243.6) | 167.2 <sup>z</sup> (113.8–246.2) | .337            |

p values in bold are significant, 1<sup>st</sup> and 3<sup>rd</sup> trimester of pregnancy <sup>a,b,c,d,e,f,g,h,i,j,k,l,m,n,o,p,r,s,t,u,v,w,z</sup>  $p < .001$ ; Wilcoxon signed-rank test, <sup>p</sup>Statistically significant at the Bonferroni-corrected  $\alpha$ .

### 3.5. Concentration and proportion of fatty acids in maternal and umbilical vein serum

Table 4 shows the FA concentrations in maternal serum, umbilical vein, and FA concentration ratios between maternal blood and umbilical vein. Significantly higher concentrations were found in the intervention group for palmitoleic acid (C16: 1 n-7) and DHA (C22: 6 n-3) compared to the control group. Significantly higher values were found in the umbilical vein serum of the stearic acid, DHA, and n-3 PUFAs in the intervention group (C18: 0)  $p = .030$ , DHA (C22: 6n-3)  $p = .009$  and n-3 PUFAs,  $p = .001$  compared to the control group. The FA concentration ratios between the maternal and umbilical veins ranged

from 1.0 for γ-linolenic acid (C18: 3n-6) to 8.0 for linoleic acid (C18: 2n-6). The concentration ratio between maternal and umbilical vein serum for DHA was 2.1 (1.5–2.8) for the intervention group and 2.4 (1.7–3.0) for the control group and AA was 1.4 (1.1–2.2) for the intervention group and 1.4 (1.1–2.0) for the control group. A higher concentration ratio between maternal blood and umbilical vein (median 7.5 and 8.0) was obtained for linoleic acid (C18: 2n-6). The proportion of palmitoleic acid (C16:1n-7), α-linoleic acid (C18:3n-3), DHA (C22:6n-3), and n-3 PUFAs were significantly higher in the serum of mothers from the intervention group compared to the control group directly before childbirth. In the umbilical vein serum, the proportions of SFAs and AA were higher in the control group than



**Table 3.** The proportion of fatty acids in two study groups of pregnant women with type 1 diabetes pregnant women.

| Ta   | Intervention group (n = 42)   | Control group (n = 42)      | p     |
|--|-------------------------------|-----------------------------|-------|
| Palmitic acid (C16:0) in the first trimester                 | 25.4 <sup>a</sup> (24.4–26.2) | 26.1 (24.2–27.0)            | .131  |
| Palmitic acid (C16:0) in the second trimester                | 26.9 (26.0–28.5)              | 27.0 (25.8–28.8)            | .799  |
| Palmitic acid (C16:0) in the third trimester                 | 28.2 <sup>a</sup> (27.1–29.2) | 27.7 (26.5–29.2)            | .168  |
| Stearic acid (C18:0) in the first trimester                  | 8.8 <sup>b</sup> (8.4–9.5)    | 8.9 (8.0–9.2)               | .287  |
| Stearic acid (C18:0) in the second trimester                 | 8.0 (7.6–8.7)                 | 7.8 (7.3–8.5)               | .299  |
| Stearic acid (C18:0) in the third trimester                  | 7.3 <sup>b</sup> (6.6–7.7)    | 7.1 (6.5–7.8)               | .970  |
| SFAs in the first trimester                                  | 36.2 (35.5–37.5)              | 37.1 (35.6–38.5)            | .117  |
| SFAs in the second trimester                                 | 37.4 (36.4–38.6)              | 37.4 (35.7–39.7)            | .938  |
| SFAs in the third trimester                                  | 37.6 (36.8–38.9)              | 37.4 (36.5–39.0)            | .893  |
| Palmitoleic acid (C16:1 n-7) in the first trimester          | 1.1 (1.0–1.4)                 | 1.1 (0.7–1.5)               | .863  |
| Palmitoleic acid (C16:1 n-7) in the second trimester         | 1.2 (0.9–1.7)                 | 1.1 (0.8–1.4)               | .289  |
| Palmitoleic acid (C16:1 n-7) in the third trimester          | 1.4 (1.0–2.0)                 | 1.3 (0.5–1.5)               | .204  |
| Oleic acid (C18:1 n-9) in the first trimester                | 16.2 (15.2–19.1)              | 15.7 (14.2–18.0)            | .242  |
| Oleic acid(C18:1 n-9) in the second trimester                | 16.4 (15.0–17.8)              | 15.9 (14.6–17.7)            | .226  |
| Oleic acid(C18:1 n-9) in the third trimester                 | 17.8 (16.2–19–3)              | 17.2 (16.6–19.2)            | .996  |
| MUFA in the first trimester                                  | 18.4 (17.2–21.6)              | 17.8 (16.0–20.4)            | .117  |
| MUFAs in the second trimester                                | 19.0 (17.3–20.6)              | 17.8 (16.3–20.1)            | .089  |
| MUFAs in the third trimester                                 | 20.2 (18.5–21.7)              | 20.0 (18.1–21.6)            | .507  |
| $\alpha$ -linolenic acid (C18:3 n-3) in the first trimester  | 0.0 (0.0–0.6)                 | 0.0 (0.0–0.7)               | .805  |
| $\alpha$ -linolenic acid (C18:3 n-3) in the second trimester | 0.5 (0.3–0.6)                 | 0.5 (0.0–0.5)               | .255  |
| $\alpha$ -linolenic acid (C18:3 n-3) in the third trimester  | 0.5 (0.4–0.7)                 | 0.5 (0.4–0.6)               | .152  |
| Eicosapentanoic acid in the first trimester (C20:5 n-3)      | 0.9 (0.7–1.0)                 | 0.9 (0.5–1.1)               | .760  |
| Eicosapentanoic acid in the second trimester (C20:5 n-3)     | 0.8 (0.6–0.9)                 | 1.0 (0.7–1.1)               | .017  |
| Eicosapentanoic acid in the third trimester (C20:5 n-3)      | 0.7 (0.6–1.9)                 | 0.9 (0.6–1.1)               | .290  |
| Docosahexaenoic acid in the first trimester (C22:6 n-3)      | 1.7 <sup>c</sup> (1.3–2.1)    | 1.6 (1.4–2.0)               | .672  |
| Docosahexaenoic acid in the second trimester (C22:6 n-3)     | 2.7 (2.2–3.4)                 | 2.0 (1.8–2.4)               | .004  |
| Docosahexaenoic acid in the third trimester (C22:6 n-3)      | 2.7 <sup>c</sup> (2.2–3.3)    | 1.9 (1.4–2.3)               | <.001 |
| n-3 PUFA in the first trimester                              | 3.1 <sup>d</sup> (2.5–4.1)    | 3.1 (2.3–4.1)               | .763  |
| n-3 PUFA in the second trimester                             | 4.3 (3.5–5.2)                 | 3.4 (2.9–3.8)               | .001  |
| n-3 PUFA in the third trimester                              | 4.3 <sup>d</sup> (3.3–5.0)    | 3.1 (2.7–3.9)               | <.001 |
| Linoleic acid in the first trimester(C18:2 n-6)              | 29.4 (27.0–31.6)              | 29.6 (28.0–32.6)            | .355  |
| Linoleic acid in the second trimester (C18:2 n-6)            | 27.9 (25.9–30.9)              | 30.8 (27.5–32.3)            | .037  |
| Linoleic acid in the third trimester(C18:2 n-6)              | 27.9 (25.7–30.1)              | 30.2 (28.0–31.8)            | .013  |
| $\gamma$ -linolenic acid in the first trimester (C18:3 n-6)  | 0.3 (0.0–0.6)                 | 0.0 (0.0–0.3)               | .037  |
| $\gamma$ -linolenic acid in the second trimester             | 0.4 (0.2–0.5)                 | 0.0 (0.0–0.3)               | .001  |
| $\gamma$ -linolenic acid in the third trimester (C18:3 n-6)  | 0.2 (0.0–0.4)                 | 0.2 (0.0–0.3)               | .391  |
| Arachidonic acid in the first trimester (C20:4 n-6)          | 8.2 <sup>e</sup> (6.6–9.7)    | 8.4 <sup>f</sup> (7.65–9.3) | .301  |
| Arachidonic acid in the second trimester (C20:4 n-6)         | 7.6 (6.3–8.2)                 | 7.8 (6.7–8.8)               | .096  |
| Arachidonic acid in the third trimester (C20:4 n-6)          | 6.5 <sup>e</sup> (5.7–7.2)    | 7.0 <sup>f</sup> (6.0–8.1)  | .060  |
| n-6 PUFA in the first trimester                              | 41.1 <sup>g</sup> (37.9–42.8) | 41.5 (39.9–43.3)            | .204  |
| n-6 PUFA in the second trimester                             | 38.2 (36.5–40.0)              | 41.3 (37.6–43.1)            | .013  |
| n-6 PUFA in the third trimester                              | 36.9 <sup>g</sup> (35.3–39.0) | 39.7 (38.2–40.9)            | .002  |
| AA/DHA in the first trimester                                | 4.8 <sup>h</sup> (3.3–6.0)    | 5.1 (4.1–6.7)               | .214  |
| AA/DHA in the second trimester                               | 2.8 (2.2–3.4)                 | 3.8 (3.3–4.6)               | <.001 |
| AA/DHA in the third trimester                                | 2.3 <sup>h</sup> (2.0–3.0)    | 3.8 (3.0–4.5)               | <.001 |
| LA/AA in the first trimester                                 | 3.5 <sup>i</sup> (2.9–5.0)    | 3.8 <sup>j</sup> (3.2–4.0)  | .764  |
| LA/AA in the second trimester                                | 4.0 (3.3–4.8)                 | 4.0 (3.3–4.5)               | .731  |
| LA/AA in the third trimester                                 | 4.3 <sup>i</sup> (3.9–5.2)    | 4.5 <sup>j</sup> (3.6–5.3)  | .792  |

LA: linoleic acid (C18:2n-6); AA: arachidonic acid (C:20:4n-6); p values in bold are significant, 1<sup>st</sup> and 3<sup>rd</sup> trimester of pregnancy <sup>a,b,c,d,e,f,g,h,i,j</sup>p<.001;Wilcoxon signed-rank test, p Statistically significant at the Bonferroni-corrected  $\alpha$ .

in the intervention group. In contrast, the proportions of  $\gamma$ -linolenic acid (C18: 3 n-6), DHA, and n-3 PUFA were higher in the intervention group, as shown in Table 3. A significantly lower proportion ratio between maternal and umbilical vein serum was found in the intervention group compared to the control for n-3 PUFAs [0.85 (0.68–0.98): 0.97 (0.8–1.24),  $p = .044$ ], as shown in Supplemental Table 3.

### 3.6. Impact of HbA1c levels, GWG and n-6 PUFAs on newborn's macrosomia

Mothers who gave birth to macrosomic newborns had significantly higher HbA1c levels in all three trimesters

of pregnancy, a higher overall weight gain, and their newborns had a lower umbilical vein serum n-6 PUFAs concentration, all shown in Supplemental Table 4.

### 3.7. Nonparametric correlation between the maternal vein and umbilical vein serum of DHA and AA

Supplemental Figures 1 and 2 show a high significant nonparametric correlation coefficient of arachidonic acid (AA) ( $r_{\text{rho}} = 0.420$ ;  $p < .001$ ) and docosahexaenoic DHA ( $r_{\text{rho}} = 0.550$ ;  $p < .001$ ) concentration between maternal and umbilical venous serum.

**Table 4.** The concentration of fatty acids in maternal and umbilical vein serum at the time of birth.

| Fatty acids (mg/L)                   | Maternal serum at birth        |                            |                            | Umbilical vein serum           |                            |                            | Ratio maternal serum: umbilical vein serum |                           |                      |
|--------------------------------------|--------------------------------|----------------------------|----------------------------|--------------------------------|----------------------------|----------------------------|--|---------------------------|----------------------|
|                                      | Intervention group<br>(n = 42) | Control group<br>(n = 42)  | p                          | Intervention group<br>(n = 42) | Control group<br>(n = 42)  | p                          | Intervention group<br>(n = 42)             | Control group<br>(n = 42) | p                    |
|                                      | <b>Total fatty acids</b>       | <b>518.7 (355.4–489.6)</b> | <b>463.1 (366.1–570.1)</b> | <b>.543</b>                    | <b>184.2 (174.1–243.3)</b> | <b>138.7 (106.3–189.2)</b> | <b>.189</b>                                | <b>3.1 (2.3–4.6)</b>      | <b>3.5 (3.3–4.9)</b> |
| Palmitic acid (C16:0)                | 150.3 (99.4–195.4)             | 140.2 (103.3–192.9)        | .610                       | 44.5 (33.9–73.8)               | 42.0 (30.0–57.6)           | .190                       | 3.1 (2.1–4.5)                              | 3.2 (2.2–4.7)             | .631                 |
| Stearic acid (C18:0)                 | 35.8 (25.7–47.5)               | 35.6 (25.3–46.7)           | .089                       | 18.5 (12.3–28.0)               | 13.8 (9.1–20.7)            | <b>.030</b>                | 2.0 (1.4–2.5)                              | 2.1 (1.4–2.5)             | .551                 |
| SFAs (C16:0 + C18:0)                 | 201.8 (113.2–261.8)            | 159.8 (131.9–263.0)        | .747                       | 71.9 (50.3–106.8)              | 62.5 (42.3–89.9)           | .215                       | 2.8 (2.0–4.0)                              | 2.9 (1.9–4.24)            | .592                 |
| Palmitoleic acid (C16:1 n-7)         | 9.2 (6.9–13.9)                 | 6.5 (4.2–10.7)             | <b>.012</b>                | 6.0 (3.9–7.7)                  | 5.0 (3.0–6.2)              | .060                       | 1.6 (1.2–2.1)                              | 1.5 (0.7–3.2)             | .610                 |
| Oleic acid (C18:1 n-9)               | 99.0 (60.0–135.7)              | 91.6 (67.6–121.1)          | .623                       | 23.0 (17.5–34.0)               | 21.1 (9.0–29.7)            | .238                       | 4.2 (3.0–5.9)                              | 4.4 (2.8–10.2)            | .719                 |
| MUFAs                                | 111.4 (70.3–160.4)             | 103.4 (74.9–137.7)         | .463                       | 31.7 (23.7–45.7)               | 26.3 (14.0–39.0)           | .142                       | 3.6 (2.6–5.0)                              | 3.9 (2.3–6.0)             | .719                 |
| $\alpha$ -linolenic acid (C18:3 n-3) | 2.9 (1.9–4.0)                  | 2.4 (0.9–3.3)              | .117                       | 0.0 (0.0–0.0)                  | 0.0 (0.0–0.0)              | NA                         |  |                           |                      |
| Eicosapentanoic acid (C20:5 n-3)     | 3.2 (2.3–4.6)                  | 3.6 (2.2–5.8)              | .546                       | 1.8 (0.0–2.4)                  | 0.0 (0.0–2.1)              | .066                       | 1.6 (1.1–2.1)                              | 2.0 (1.1–3.1)             | .290                 |
| Docosahexaenoic acid (C22:6 n-3)     | 11.4 (7.7–17.5)                | 9.2 (6.0–12.3)             | <b>.030</b>                | 5.1 (3.0–7.7)                  | 3.4 (2.1–5.6)              | <b>.009</b>                | 2.1 (1.5–2.8)                              | 2.4 (1.7–3.0)             | .589                 |
| n-3 PUFA                             | 11.3 (7.7–17.5)                | 9.2 (6.0–12.3)             | .062                       | 5.1 (3.0–7.7)                  | 3.4 (2.1–5.6)              | <b>.001</b>                | 2.1 (1.5–2.8)                              | 2.4 (1.7–3.9)             | .214                 |
| Linoleic acid (C18:2 n-6)            | 135.7 (97.5–193.8)             | 128.6 (89.3–187.3)         | .648                       | 17.8 (10.9–25.3)               | 15.5 (8.6–22.6)            | .213                       | 7.5 (4.9–11.2)                             | 8.0 (5.5–12.6)            | .728                 |
| $\gamma$ -linolenic acid (C18:3 n-6) | 1.2 (0.0–1.4)                  | 0.0 (0.0–1.6)              | .182                       | 1.0 (0.0–1.4)                  | 0.0 (0.0–0.3)              | <b>&lt;.001</b>            | 1.0 (0.7–1.4)                              | 0.9 (0.0–2.0)             | .887                 |
| Arachidonic acid (C20:4 n-6)         | 29.4 (22.2–40.2)               | 30.8 (20.0–43.3)           | .915                       | 19.3 (12.1–30.3)               | 20.4 (13.1–27.3)           | .889                       | 1.4 (1.1–2.2)                              | 1.4 (1.1–2.0)             | .737                 |
| n-6 PUFA                             | 184.2 (123.3–247.0)            | 176.9 (119.2–240.8)        | .655                       | 43.5 (32.2–67.7)               | 43.0 (32.1–58.9)           | .368                       | 3.7 (3.1–5.4)                              | 3.7 (2.6–5.5)             | .944                 |

p values in bold are significant.

## 4. Discussion

### 4.1. Maternal and foetal effects of EPA and DHA supplementation

The gestational weight gain in the second and third trimesters was significantly higher in the intervention group than in the control group. Some studies have found a negative association between n-3 PUFA concentrations and body weight or adipose tissue volume [19,20]; other studies [21–23] have found an association between n-3 PUFA concentrations and abdominal obesity which is in line with our study. Studies in experimental animals have shown that dietary supplementation with ALA, EPA, and DHA reduces obesity [24]. A diet rich in n-6 PUFAs increases AA and its endocannabinoid metabolites, enhancing food consumption and obesity development [25–27]. The adipogenic effect of n-6 PUFAs can be prevented by consuming sufficient amounts of EPA and DHA to reduce AA in cellular phospholipids and endocannabinoid synthesis [28], which we did not find in our study.

Our study results show no effect of the total fatty acid concentration on the child's birth weight. A smaller proportion of n-6 PUFAs was found in the umbilical vein serum of macrosomic neonates than eutrophic neonates. Makrides et al. [29], in a randomized study with n-3 PUFA supplementation in healthy pregnant women, found no difference in birth weight or prevalence of neonatal macrosomia compared to the controls, which is in line with our study. According to Pedersen's hypothesis, fetuses from mothers with T1DM exhibit accelerated growth because increased maternal glucose transmission from the placenta to the foetus causes foetal hyperinsulinemia [30,31]. With strict metabolic control, we reduced the incidence of neonatal macrosomia to only 14%. In contrast to our results in reducing neonatal macrosomia, Evers et al. [32] found a high prevalence (45.1%) of neonatal macrosomia despite, in their opinion, optimal metabolic control. Mothers of macrosomic infants had elevated HbA1c levels in all three trimesters of pregnancy and higher total weight gain than mothers of eutrophic infants.

In our recent studies, macrosomic fetuses of mothers with type 1 diabetes had higher insulin, IR, and leptin levels. They manifested substantial differences in the total FA concentrations in the umbilical vein and artery, demonstrating an increased deposition of fatty tissue than those from the control group. Macrosomic fetuses from healthy pregnant women had normal blood glucose levels and non-elevated insulin and leptin levels [33,34].

#### 4.2 C-Peptide concentration in pregnant women with type 1 diabetes mellitus

Comparing fasting C-peptide concentrations across all three trimesters, we found a significant increase from the first to the third trimester in the intervention group. This finding is consistent with our previous research showing that EPA and DHA supplementation in pregnancy with type 1 diabetes increases the C-peptide concentration [3] and is consistent with the reported increase in C-peptide throughout pregnancy Nielsen et al. [35].

#### 4.3. Change in FA concentration and proportion during pregnancy

During pregnancy, the concentrations of total FAs, SFAs, MUFAs, n-6, and n-3 PUFAs and individual FAs in both studied groups increased significantly, which is in agreement with Al MD's et al. study [36]. Pregnant women in the intervention group had a significantly higher increase in the concentration of DHA and n-3 PUFAs in the second and third trimester of pregnancy compared to the control group, which was expected given the EPA's compensation DHA in the diet. In the intervention group, the proportions of palmitic and stearic acid, SFAs, DHA, and n-3 PUFAs increased during pregnancy, and the proportions of AA, n-6 PUFAs, and AA/DHA decreased significantly. The decrease in the proportion of AA, n-6 PUFAs, and the AA/DHA ratio increased DHA and n-6 PUFAs in the control group. This study shows that supplementation with 120 mg/day EPA and 616 mg/day DHA throughout pregnancy significantly alters the fatty acid concentration and proportion of maternal and umbilical vein serum. Arachidonic acid derivatives have an inflammatory effect, increase platelet aggregation, induce smooth muscle cell contraction, and are associated with many diseases. The increased proportion of n-3 PUFAs in cell membrane phospholipids reduces the availability of arachidonic acid and inflammatory metabolite production. EPA is a precursor for the synthesis of prostaglandins, thromboxanes, prostacyclin series three, and leukotrienes series five, which have anti-inflammatory activity. Additionally, EPA and DHA synthesize resolvins and protectins that have potent anti-inflammatory activity. In the intervention group, pregnant women had higher concentrations and a higher proportion of DHA and total n-3 PUFAs, as expected, given EPA and DHA supplementation.

The total amount of FA did not differ in umbilical vein serum between the study groups. Higher concentrations of stearic acid (C18: 0),  $\gamma$ -linolenic acid (C18: 3

n-6), DHA, and n-3 PUFAs were found in the intervention group compared to the control. We consider that the increased concentration of stearic acid (C18: 0) in the serum of the intervention group's umbilical vein results from increased foetal synthesis. Significantly higher concentrations and proportions of DHA and n-3 PUFAs and a reduced AA proportion and AA/DHA ratio in umbilical vein serum were found in the intervention group than in the control group. Comparing the ratios of individual FA concentrations between maternal and umbilical veins, we found no difference between the study groups. The lowest ratios were found for  $\gamma$ -linolenic acid (C18: 3 n-6), AA, EPA, and DHA, which means that these fatty acids pass in higher amounts than other FAs. The highest ratio was found for linoleic acid (C18: 2 n-6) (7.5 and 8.0), which means that this fatty acid passes in smaller amounts from the mother across the placenta to the foetus (biomagnification increased AA transport and less for LA).

The placenta is essential for selective AA and DHA canalisation from the mother to the foetus; the evidence is a high coefficient of correlation between AA and DHA in the mother and the foetus ( $r_{\text{rho}}=0.550$ ;  $r_{\text{rho}}=0.420$ , all  $p < .001$ , Supplemental Figures 1 and 2).

There is no consensus recommendation for n-3 LC-PUFA supplementation in pregnant and lactating women. Some authors recommend a daily DHA intake of 300 mg during pregnancy and lactation, whereas others suggest 200–300 mg DHA daily [7,37]. European Food Safety Authority (EFSA) allows reaching the Dietary Reference Value for LC-PUFA (250 mg EPA plus DHA, plus an, additional 100 – 200 mg of DHA) either by food and supplements. Helland IB et al. prescribed the pregnant women supplementation of DHA 1183 mg/day and EPA 803 mg/day [16]. This study indicated that maternal supplementation with EPA and DHA during pregnancy and lactation improved children's intelligence at four years [16].

The participants included in our study group received 616 mg DHA daily. It significantly increased the concentration and proportion of DHA, n-3 PUFAs in total lipids, decreased proportion of AA and n-6 PUFAs, and the decreased ratio of AA/DHA in maternal and foetal serum.

##### 4.3.1. Strengths and limitations of this study

Our study is the first one investigating the effects of EPA and DHA supplementation during pregnancy in women with type 1 diabetes to the best of our knowledge. The concentration of individual fatty acids assessed from the first trimester of pregnancy to

delivery was the study's strength. We have compared the fatty acid concentrations with GWG, HbA1c, C-peptide in the umbilical vein and explored their influence on foetal growth. We did not use a food frequency questionnaire (FFQ) to get the FAs intake information in our participants, which we consider a limitation of the study. On the other hand, diabetic patients in Croatia are controlled for almost 50 years in our State Referral Centre for Diabetes in Pregnancy and well known as patients of high compliance when participating in clinical trials. That reassured us that the vast majority of participants would previously ask for consultations if they decided to deviate from the study protocol. In conclusion, the increased concentrations and proportions of DHA and n-3 PUFAs with a decreased proportion of AA, n-6 PUFAs, and AA/DHA ratio measured in the maternal vein and umbilical vein serum summarize the effect of supplementation with EPA and DHA. According to this trial results, diabetic mothers and their newborns may benefit from EPA and DHA supplementation.

## Acknowledgments

We express our gratitude to the participants of the prospective randomized trial study

## Author contributions

The authors' responsibilities were as follows: MI, MH, JD: designed the research; MI, MH: conducted the research; JD, KD: analysed data; JD, KD: performed statistical analysis; JD, MI, KD, JD: wrote the paper; JD: had primary responsibility for final content, and all authors: read and approved the final manuscript.

## Disclosure statement

No potential conflict of interest was reported by the author(s).

## Funding

The study was part of the scientific project approved by the Ministry of Science, Education and Technology of the Republic of Croatia, entitled Metabolic and Endocrine Changes in Pregnant Patients with Diabetes [No. 108-1080401-0386].

## References

- [1] Expert Committee on the Diagnosis and Classification of Diabetes Mellitus. Report of the Expert Committee on the Diagnosis and Classification of Diabetes Mellitus. *Diabetes Care*. 1997;20:1183–1197.
- [2] Herrera E. Metabolic changes in diabetic pregnancy. In Djelmis J, Desoye G, Ivanisevic M, editors. *Diabetology of pregnancy*. Basel: Karger; 2005. p. 34–45.
- [3] Horvaticek M, Djelmis J, Ivanisevic M, et al. Effect of eicosapentaenoic acid and docosahexaenoic acid supplementation on C-peptide preservation in pregnant women with type-1 diabetes: a randomized placebo-controlled clinical trial. *Eur J Clin Nutr*. 2017;71(8): 968–972.
- [4] Herrera E, Ortega-Senovilla H. Implications of lipids in neonatal body weight and fat mass in gestational diabetic mothers and non-diabetic controls. *Curr Diab Rep*. 2018;18(2):7.
- [5] Whalley LJ, Fox HC, Wahle KW, et al. Cognitive aging, childhood intelligence, and the use of food supplements: possible involvement of n-3 fatty acids. *Am J Clin Nutr*. 2004;80(6):1650–1657.
- [6] Koletzko B, Lien E, Agostoni C, et al. The roles of long-chain polyunsaturated fatty acids in pregnancy, lactation, and infancy: review of current knowledge and consensus recommendations. *J Perinat Med*. 2008;36:5–14.
- [7] Neuringer M, Reisbick S, Janowsky J. The role of n-3 fatty acids in visual and cognitive development: current evidence and methods of assessment. *J Pediatr*. 1994;125(5):S39–S47.
- [8] Hanebutt FL, Demmelmair H, Schiessl B, et al. Long-chain polyunsaturated fatty acid (LC-PUFA) transfer across the placenta. *Clin Nutr*. 2008;27(5):685–693.
- [9] Herrera E. Lipid metabolism in pregnancy and its consequences in the fetus and newborn. *ENDO*. 2002; 19(1):43–55.
- [10] Man MZ, Hui TY, Schaeffer JE, et al. Regulation of the murine adipocyte fatty acid transporter gene by insulin. *Mol Endocrinol*. 1996;10:1021–1028.
- [11] Knipp GT, Liu B, Audus KL, et al. Fatty acid transport regulatory proteins in the developing rat placenta and in trophoblast cell culture models. *Placenta*. 2000;21(4):367–375.
- [12] Bass NM. The cellular intestinal fatty acid-binding proteins: aspects of structure, regulation, and function. *Int Rev Cytol*. 1988;111:143–184.
- [13] Mocking RJT, Steijn K, Roos C, et al. Omega-3 fatty acid supplementation for perinatal depression: a meta-analysis. *J Clin Psychiatry*. 2020;81(5):19r13106.
- [14] Olsen SF, Halldorsson TI, Thorne-Lyman AL, et al. Plasma concentrations of long-chain n-3 fatty acids in early and mid-pregnancy and risk of early preterm birth. *EBioMedicine*. 2018;35:325–333.
- [15] Helland IB, Smith L, Saarem K, et al. Maternal supplementation with very-long-chain n-3 fatty acids during pregnancy and lactation augments children's IQ at 4 years of age. *Pediatrics*. 2003;111(1):e39–e44.
- [16] Levy JC, Matthews DR, Hermans MP. Correct homeostasis model assessment (HOMA) evaluation uses the computer program. *Diabetes Care*. 1998;21(12): 2191–2192.

- [17] Folch J, Lees M, Sloane-Stanley GH. A simple method for the isolation and purification of total lipids from animal tissue. *J Biol Chem.* 1957;226(1):497–509.
- [18] Buckley JD, Howe PR. Long-chain omega-3 polyunsaturated fatty acids may be beneficial for reducing obesity—a review. *Nutrients.* 2010;2(12):1212–1230.
- [19] Micallef M, Munro I, Phang M, et al. Plasma n-3 polyunsaturated fatty acids are negatively associated with obesity. *Br J Nutr.* 2009;102(9):1370–1374.
- [20] Wang L, Manson JE, Rautiainen S, et al. A prospective study of erythrocyte polyunsaturated fatty acid, weight gain, and risk of becoming overweight or obese in middle-aged and older women. *Eur J Nutr.* 2016;55(2):687–697.
- [21] Dewailly E, Blanchet C, Lemieux S, et al. n-3 Fatty acids and cardiovascular disease risk factors among the Inuit of Nunavik. *Am J Clin Nutr.* 2001;74(4):464–473.
- [22] Munro IA, Garg ML. Dietary supplementation with n-3 PUFA does not promote weight loss when combined with a very low-energy diet. *Br J Nutr.* 2012;108(8):1466–1474.
- [23] Demers G, Roy J, Machuca-Parra AI, et al. Fish oil supplementation alleviates metabolic and anxiodepressive effects of diet-induced obesity and associated changes in brain lipid composition in mice. *Int J Obes.* 2020;44(9):1936–1945.
- [24] Alvheim AR, Malde MK, Osei-Hyiaman D, et al. Dietary linoleic acid elevates endogenous 2-AG and anandamide and induces obesity. *Obesity.* 2012;20(10):1984–1994.
- [25] Massiera F, Saint-Marc P, Seydoux J, et al. Arachidonic acid and prostacyclin signaling promote adipose tissue development: a human health concern? *J Lipid Res.* 2003;44(2):271–279.
- [26] Osei-Hyiaman D, DePetrillo M, Pacher P, et al. Endocannabinoid activation at hepatic CB1 receptors stimulates fatty acid synthesis and contributes to diet-induced obesity. *J Clin Invest.* 2005;115(5):1298–1305.
- [27] Simopoulos AP, DiNicolantonio JJ. The importance of a balanced  $\omega$ -6 to  $\omega$ -3 ratio in the prevention and management of obesity. *Open Heart.* 2016;3(2):e000385.
- [28] Makrides M, Best K, Yelland L, et al. A randomized trial of prenatal n – 3 fatty acid supplementation and preterm delivery. *N Engl J Med.* 2019;381(11):1035–1045.
- [29] Ladfors L, Wiberg N, Katarou A, et al. Fetal overgrowth in women with type 1 and type 2 diabetes mellitus. *PLOS One.* 2017;12(11):e0187917.
- [30] Morrens A, Verhaeghe J, Vanhole C, et al. Risk factors for large-for-gestational age infants in pregnant women with type 1 diabetes. *BMC Pregnancy Childbirth.* 2016;16(1):162.
- [31] Evers IM, de Valk HW, Mol BWJ, et al. Macrosomia despite good glycaemic control in type I diabetic pregnancy: results of a nationwide study in the Netherlands. *Diabetologia.* 2002;45(11):1484–1489.
- [32] Ivanisevic M, Delmis K, Herman M, et al. Concentrations of fatty acids among macrosomic neonates delivered by healthy women and women with type 1 diabetes mellitus. *Int J Gynecol Obstet.* 2020;149(3):309–317.
- [33] Djelmis J, Ivanisevic M, Desoye G, et al. Higher cord blood levels of fatty acids in pregnant women with type 1 diabetes mellitus. *J Clin Endocrinol Metab.* 2018;103(7):2620–2629.
- [34] Nielsen LR, Rehfeld JF, Pedersen-Bjergaard U, et al. Pregnancy-induced rise in serum C-peptide concentrations in women with type 1 diabetes. *Diabetes Care.* 2009;32(6):1052–1057.
- [35] Al MD, van Houwelingen AC, Kester AD, et al. Maternal essential fatty acid patterns during normal pregnancy and their relationship to the neonatal essential fatty acid status. *Br J Nutr.* 1995;74(1):55–68.
- [36] Food Nutrition Board of the Institute of Medicine. Nutrient Recommendations: Dietary Reference Intakes (DRI). National Institutes of Health, Office of Dietary Supplements. Available online: [https://ods.od.nih.gov/Health\\_Information/Dietary\\_Reference\\_Intakes.aspx](https://ods.od.nih.gov/Health_Information/Dietary_Reference_Intakes.aspx)
- [37] EFSA Panel on Dietetic Products, Nutrition, and Allergies (NDA). Scientific Opinion on Dietary Reference Values for fats, including saturated fatty acids, polyunsaturated fatty acids, monounsaturated fatty acids, trans fatty acids, and cholesterol. *EFSA J.* 2010;8(3):146.