

DARIAH Competence Centre

**Philipp Wieder
on behalf of the DARIAH-CC**

GWDG - Gesellschaft für wissenschaftliche
Datenverarbeitung mbH Göttingen

DARIAH Competence Centre, EGI-Engage



www.egi.eu
u

EGI-Engage is co-funded by the Horizon 2020 Framework Programme
of the European Union under grant number 654142



- **Coordinator:**

- Ruđer Bošković Institute (**RBI**), Zagreb, Croatia

- **Partners:**

- Hungarian Academy of Science, Institute for Computer Science and Control (**MTA SZTAKI**), Hungary
- Italian National Institute of Nuclear Physics (**INFN**), Italy
- Gesellschaft für wissenschaftliche Datenverarbeitung mbH (**GWDG**), Germany
- Data Archiving and Networked Services (**DANS**), Netherlands
- Austrian Academy of Science (**AAS**), Austria



- Integrate and promote federated (cloud) services for Arts & Humanities (A&H)
- Objectives:
 - Strengthening the **collaboration** between EGI and DARIAH
 - **Increasing** the number of A&H services and applications using cloud technologies
 - **Promote** usage of e-Infrastructure in A&H
 - Providing **access** to **EGI FedCloud** resources
 - Technical support and knowledge transfer



digitization
storing

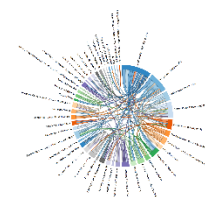
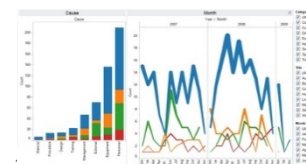
STORAGE



Search
Browse
Access
Annotate
Archive

analysis

COMPUTE



DARIAH, the Digital Research Infrastructure for the Arts and Humanities...

...aims to enhance and support digitally-enabled research and teaching across the humanities and arts.

It is a connected network of **tools, information, people and methodologies** for investigating, exploring and supporting research across digital arts and humanities for researchers and humanists

Community

Outreach, training, user support

Apps.
and
services

Training
platform

Cloud
Access

Optical
Character
Recognition
system

Semantic
Search
Engine

DBO@Clou
d

New app & services

Technologies

DARIAH Science Gateway

LIFERAY
Enterprise Open Source For Life

CDSTAR

WS-PGRADE

Library

e-Infrastructure

EGI FedCloud infrastructure

DARIAH Virtual Organisation

Federated DARIAH
resources
AAI

- **DARIAH Science Gateway** (<https://dariah-gateway.lpds.sztaki.hu>)
- Established DARIAH VO (vo.dariah.eu)
- FedCloud resources across 4 countries
- SLA agreement with 2 EGI FedCloud sites on resource provisioning
- 4 new cloud-based services offered to A&H communities through the Gateway
 - Simple Cloud Access
 - FileTransfer service (DataAvenue)
 - gLibrary
 - CDSTAR
- 4 demonstrators and use-cases as part of the Gateway
 - Parallel Semantic Search Engine
 - Semantic Search Engine
 - DBO -Virtual dialect dictionary
 - SIR - Multi-Source Distributed Real-Time Search and Information Retrieval

https://dariah-gateway.lids.sztaki.hu/web/guest/psse

EGI DARIAH CC Gateway

Welcome Applications Cloud Access Workflow Development File Transfer Help

Applications / Parallel Semantic Search Engine

PARALLELSEMANTICSEARCH-PORTLET

Welcome to the parallel Semantic Search Engine (SSE)

Using the SSE you can search in parallel and in more than 100 languages across several Linked Data repositories:

1. The e-Infrastructure Knowledge Base (KB) containing more than 30 million resources belonging to thousands of semantically enriched Open Access Document Repositories and Data Repositories. Search results are ranked according to the Ranking Web of Repositories.
2. Europeana, Cultura Italia, Isidore, OpenAgris, PubMed and DBPedia (Note: Cultura Italia only allows 1-keyword searches)

Click here to get some examples



bellis perennis

Search

E-INFRA-KB OPENAGRIS EUROPEANA CULTURAITALIA ISIDORE PUBMED DBPEDIA

Records found. Displaying 1 to 4

Title

Prvo priopćenje o vrsti Puccinia distincta McAlpine, novoj europskoj hrđi na tratinčicama (Bellis perennis L.) iz Hrvatske (Citations) (Linked Data)

First report of Puccinia distincta McAlpine, the new European rust on daisies (Bellis perennis L.), from Croatia (Citations) (Linked Data)

Author

Weber Roland W.S., Lehrbereich Biotechnologie Universität Kaiserslautern Paul-Ehrlich-Str.23 67663 Kaiserslautern Germany; Jurec Dušan; Gozdarski Institut Slovenije Večnapot2 1000 Ljubljana p.p.2985 Slovenia

Description

Teška infekcija hrđe na divljim i uzgajanim tratinčicama (Bellis perennis L.) otkrivena je u travnju i svibnju 2000. na izoliranom probirom području između Lovrana i Opatije. Patogena gljiva bila je determinirana kao Puccinia distincta McAlpine, koja se protekle četiri godine brzo širi po Europi.

Repository

Portal of scientific journals of Croatia

More info



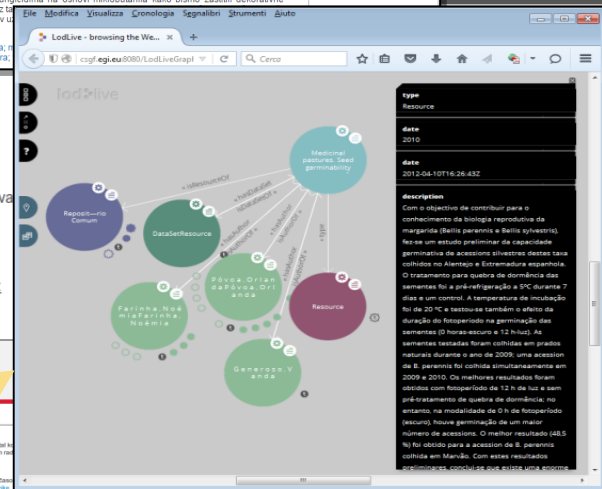
hrčak
PORTAL ZNANSTVENIH ČASOPISA REPUBLIKE HRVATSKE

Početa stranica
Abecedni popis časopisa
Časopisi po područjima
Priručnici
Tehničke znanosti
Biomedicina i zdravstvo
Botaničke znanosti
Društvene znanosti
Humanističke znanosti
Uredništva
Posljednost časopisa
Priloga novog časopisa
Autori
Priloga radova

Natura Croatica, Vol.9 No.4 Prosinac 2000.
Izvorni znanstveni članak
Prvo priopćenje o vrsti Puccinia distincta McAlpine, novoj europskoj hrđi na tratinčicama (Bellis perennis L.) iz Hrvatske
Dušan Jurec: Gozdarski Institut Slovenije, Večna pot 2, 1000 Ljubljana, p.p. 2985, Slovenia
Roland W. S. Weber: Lehrbereich Biotechnologie, Universität Kaiserslautern, Paul-Ehrlich-Str. 23, 67663 Kaiserslautern, Germany
Puni tekst: pdf (479 KB), Engleski, Str. 225 - 236 - preuzimanje: 448 *

Sažetak
Teška infekcija hrđe na divljim i uzgajanim tratinčicama (Bellis perennis L.) otkrivena je u travnju i svibnju 2000. na izoliranom probirom području između Lovrana i Opatije. Patogena gljiva bila je determinirana kao Puccinia distincta McAlpine, koja se protekle četiri godine brzo širi po Europi, a možda dolazi iz Australije. U ovom prikazu opisuju se dijagnostičke značajke gljive P. distincta primjenjujući materijal iz Hrvatske i predloženo pranje funkcijama na osnovi mikrobiotanki kako bismo zaštitili dekorativne tratinčice u vrtovima naših gradova. Bez P. distincta više neće biti moguć njihov uzgoj.

Ključne riječi
Bellis perennis, ecdispora, Luzula, obscura, hrđa, Senecio, Mikrobiotanki



FTP, GSIFTP, SRM, iRODS and S3

Powered by Liferay

Achievements II: Dissem. & Outreach

- Established “Cloud infrastructure” DARIAH Working Group
 - WG inside DARIAH-EU helping to shape cloud-based A&H services
- > 15 presentations, posters and publications at various A&H as well as EGI-related events
- Central info for the DARIAH CC outcomes:

https://wiki.egi.eu/wiki/Competence_centre_DARIAH

- Increasing demand for cloud, HPC, & analytics
 - ✉ Motivation for DARIAH-CC holds true
 - A&H communities have very diverse requirements, a multitude of tools, and scattered resources
 - ✉ Portal approach to unify access seems to be right
 - Long tail of science particularly true for A&H communities
 - ✉ EGI/EOSC help to provide basic services, but ...
... potentially little number of users per thematic service
- A&H community provides huge potential for EGI/EOSC, but service development and integration is key

Actions towards the end of EGI-Engage

- Continue with the dissemination activities
 - Two confirmed presentations for DPASSH (Brighton, UK) and Methods XVI in Dialectology (Tokyo, Japan)
 - Wait for confirmation for more presentations (i.a. DH2017 and HDH2017 conferences)
- Prolong existing SLA and extend it with new resource providers
- Hands-on training workshop for ...
 - ... app developers
 - Indigo repository, gLibrary, CDSTAR
 - ... end-users
 - PSSE, DBO@Cloud, SIR, Cloud Access

- Maintain dissemination and exploitation of the DARIAH CC services
 - Through DARIAH “Cloud infra” WG
 - In-kind contribution
- Increase the number of services offered via the DARIAH Science Gateway
 - Via other projects and initiatives (e.g. EOSC-Hub, internal DARIAH-EU projects, national funds)
- Provide support for new applications and use-cases
 - Via other project projects and funds (e.g. EOSC-Hub, internal DARIAH-EU projects, national funds) or in-kind

DARIAH Competence Centre

Questions?



www.egi.eu

This work by Parties of the EGI-Engage Consortium is licensed under a [Creative Commons Attribution 4.0 International License](https://creativecommons.org/licenses/by/4.0/).

